

# Rosemount™ 1208C Level and Flow Transmitter

Non-Contacting Radar with HART® Protocol



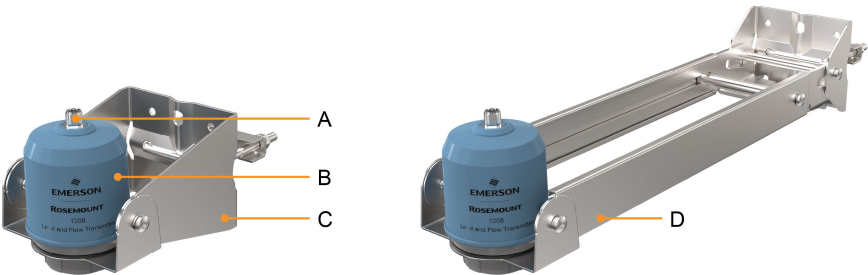
- Cost-effective FMCW radar with 80 GHz technology
- Compact and robust housing that withstands outdoor conditions, is submersible, and is suitable for hazardous locations
- Ideal for level measurement in small tanks and open air applications
- Volume flow measurement in open channels
- Maintenance free solution unaffected by process conditions such as density, viscosity, temperature, and pressure
- 4-20 mA HART® Revision 7 and models with Bluetooth® connectivity deliver ease of integration to existing and new systems

# Introduction

## Good fit for open air applications

Rosemount 1208C delivers reliable level measurements regardless of challenging weather conditions such as condensation, wind, sunlight, and changing temperature. The transmitter can also be used in open channel applications to determine the volume flow.

Figure 1: Bracket Mounting



- A. M12 connector for simple commissioning
- B. PVDF housing
- C. Standard bracket
- D. Extendable bracket

## Installation flexibility on tanks

The compact design of the transmitter allows it to be installed in tight spaces and small vessels, either by using a threaded flange or a threaded fitting.



## Contents

Introduction.....	2
Ordering information.....	5
Performance specifications.....	9
Functional specifications.....	11
Physical specifications.....	15
Installation considerations.....	17
Product certifications.....	20
Dimensional drawings.....	21

## Easy integration into control systems

Connect the Rosemount 1208C to your host system or visualize and control your process data by pairing with the Rosemount 3490 Controller. The controller provides comprehensive control functionality for any of your 4–20 mA or HART compatible devices.

## Non-contacting radar technology

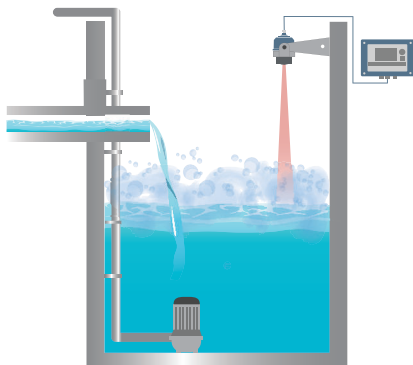
Non-contacting radar technology is ideal for a wide range of applications as it is maintenance-free, has a top-down installation that reduces the risk of leakages, and is unaffected by process conditions such as density, viscosity, temperature, pressure, and pH.

The device uses Frequency Modulated Continuous Wave (FMCW) technology and smart algorithms, such as Smart Echo Supervision™ technology, to maximize measurement accuracy and reliability. This ensures optimal performance, even in small tanks and challenging fast-filling vessels.

## Application examples

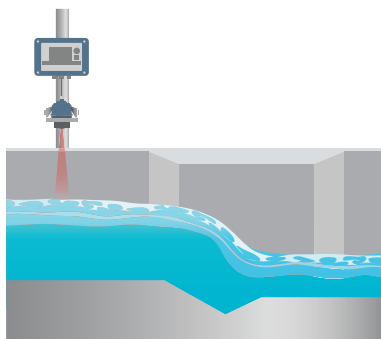
### Level and pump control

Pump stations need accurate measurement and control to ensure an optimal water flow to the next stage of the potabilization process, while also avoiding overflows and pumps from dry-running. Level measurement is essential to ensure a sustainable extraction of water and a sufficient supply of water to the next phases of the potabilization process.



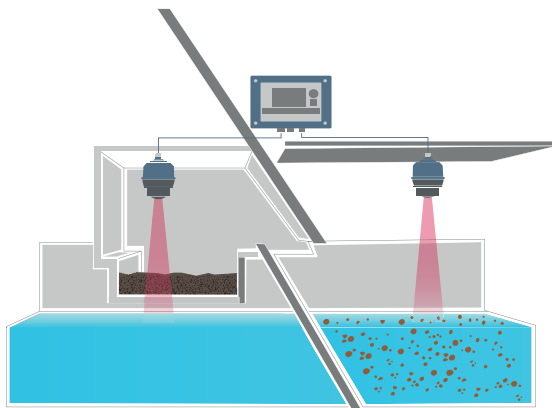
### Open channel flow

Open-air channels transport water from a water source to a water plant where it will be processed. Flow monitoring in open channels is important to know the amount of water that is flowing to comply with regulations and avoid flooding.



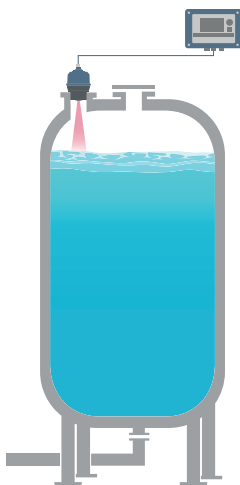
### Differential level

In the screening process level measurement is necessary to monitor the level of water in the different parts of the screen, which will determine when to start the cleaning of the sieve.



### Tank volume

Storage tanks are used in water processes to store chemical substances, which are needed to treat the water. Level measurement is necessary to monitor, optimize chemical dosing, and avoid overfilling.



## Access information when you need it with asset tags

Newly shipped devices include a unique QR code asset tag that enables you to access serialized information directly from the device. With this capability, you can:

- Access device drawings, diagrams, technical documentation, and troubleshooting information in your MyEmerson account.
- Improve mean time to repair and maintain efficiency.
- Ensure confidence that you have located the correct device.
- Eliminate the time-consuming process of locating and transcribing nameplates to view asset information.

# Ordering information

## Online product configurator

Many products are configurable online using our product configurator. Select the **Configure** button or visit [Emerson.com/global](https://emerson.com/global) to start. With this tool's built-in logic and continuous validation, you can configure your products more quickly and accurately.

## Specifications and options

Specification and selection of product materials, options, and/or components must be made by the purchaser of the equipment.

### Related information

- [Performance specifications](#)
- [Functional specifications](#)
- [Physical specifications](#)
- [Material selection](#)

## Model codes

Model codes contain the details related to each product. Exact model codes will vary; an example of a typical model code is shown in [Figure 2](#).

**Figure 2: Model Code Example**

1208 C N	BLE EX SN2 E01
1	2

1. Required model components (choices available on most)
2. Additional options (variety of features and functions that may be added to products)

## Rosemount 1208C Level and Flow Transmitter



The Rosemount 1208C is a non-contacting radar transmitter for continuous measurement of level, and volume flow in open channels.

[CONFIGURE >](#)
[VIEW PRODUCT >](#)

### Required model components

#### Model

Code	Description
1208	Level and Flow Transmitter

#### Device type

Code	Description
C	2-wire, HART®

#### Connection type

Code	Description
N	NPT thread 1½-in.
G	G thread 1½-in.

### Additional options

#### Local wireless device access (Bluetooth®)

Code	Description
BLE	Bluetooth configuration and maintenance

#### Hazardous locations certifications

Code	Description	Available cables
EX	Increased Safety Zone 2 / Division 2 (ATEX, IECEx, USA, Canada)	E01, E02, and E03

#### Related information

[Product certifications](#)
[Cable option](#)

#### Process connection type

Code	Description	Center hole	Material
BZS	Mounting bracket, standard, for pipe/ceiling/wall	N/A	316L
BZE	Mounting bracket, extendable, for pipe/wall	N/A	316L
SG2	DN50 PN16 flange, EN1092-1	G 1½-in.	1.4404
SG3	DN80 PN16 flange, EN1092-1	G 1½-in.	1.4404

Code	Description	Center hole	Material
SG4	DN100 PN16 flange, EN1092-1	G 1½-in.	1.4404
SN2	2-in. Class 150 flange, ASME B16.5	NPT 1½-in.	316/316L
SN3	3-in. Class 150 flange, ASME B16.5	NPT 1½-in.	316/316L
SN4	4-in. Class 150 flange, ASME B16.5	NPT 1½-in.	316/316L
PG2 <sup>(1)</sup>	DN50 PN10/16 flange	G 1½-in.	PE100
PG3 <sup>(1)</sup>	DN80 PN10/16 flange	G 1½-in.	PE100
PG4 <sup>(1)</sup>	DN100 PN10/16 flange	G 1½-in.	PE100
PN2 <sup>(1)</sup>	2-in. Class 150 flange	NPT 1½-in.	PE100
PN3 <sup>(1)</sup>	3-in. Class 150 flange	NPT 1½-in.	PE100
PN4 <sup>(1)</sup>	4-in. Class 150 flange	NPT 1½-in.	PE100

(1) The PE100 flanges must be used only in non-pressurized applications.

## Related information

[Type 1 Drawing](#)

## Cable option

Only cable options E01, E02, and E03 are suitable for installation in hazardous locations.

Code	Description	Length
C09	Cable assembly, 4P A-code, M12 female angled - Unterminated, IP66/IP68, Non Ex	6.6 ft. (2 m)
C10	Cable assembly, 4P A-code, M12 female angled - Unterminated, IP66/IP68, Non Ex	16.4 ft. (5 m)
C11	Cable assembly, 4P A-code, M12 female angled - Unterminated, IP66/IP68, Non Ex	32.8 ft. (10 m)
C12	Cable assembly, 4P A-code, M12 female angled - Unterminated, IP66/IP68, Non Ex	65.6 ft. (20 m)
C13	Cable assembly, 4P A-code, M12 female angled - Unterminated, IP66/IP68, Non Ex	164 ft. (50 m)
C14	Cable assembly, 4P A-code, M12 female straight - Unterminated, IP66/IP68, Non Ex	6.6 ft. (2 m)
C15	Cable assembly, 4P A-code, M12 female straight - Unterminated, IP66/IP68, Non Ex	16.4 ft. (5 m)
C16	Cable assembly, 4P A-code, M12 female straight - Unterminated, IP66/IP68, Non Ex	32.8 ft. (10 m)
C17	Cable assembly, 4P A-code, M12 female straight - Unterminated, IP66/IP68, Non Ex	65.6 ft. (20 m)
C18	Cable assembly, 4P A-code, M12 female straight - Unterminated, IP66/IP68, Non Ex	164 ft. (50 m)
C19 <sup>(1)</sup>	Connector, 4P A-code, M12 female straight - Field attachable, IP67, Non Ex	N/A
E01 <sup>(2)(3)</sup>	Cable assembly, 4P A-code, M12 female angled - Unterminated, IP68/IP69K, Ex	16.4 ft. (5 m)
E02 <sup>(2)(3)</sup>	Cable assembly, 4P A-code, M12 female angled - Unterminated, IP68/IP69K, Ex	65.6 ft. (20 m)
E03 <sup>(2)(3)</sup>	Cable assembly, 4P A-code, M12 female angled - Unterminated, IP68/IP69K, Ex	164 ft. (50 m)

(1) The transmitter is not shipped with a connector; the option can be added for non-hazardous installations. The connector is suitable for a cable diameter range of 0.16 to 0.24 in. (4 to 6 mm).

(2) The ambient temperature range is limited to -22 to 140 °F (-30 to 60 °C).

(3) A captive safety clip is shipped with each cable.

## Accessories

### Mounting brackets

Description	Material	Part number
Mounting bracket, standard, for pipe/ceiling/wall	316L	01208-5000-0001
Mounting bracket, extendable, for pipe/wall	316L	01208-5000-0002

### Process connection adapters and flanges

Description	Center hole	Material	Part number
2-in. Class 150 flange for non-pressurized applications	NPT 1½-in.	PE100	01208-5000-0003
3-in. Class 150 flange for non-pressurized applications	NPT 1½-in.	PE100	01208-5000-0004
4-in. Class 150 flange for non-pressurized applications	NPT 1½-in.	PE100	01208-5000-0005
2-in. Class 150 flange, ASME B16.5	NPT 1½-in.	316/316L	01208-5000-0006
3-in. Class 150 flange, ASME B16.5	NPT 1½-in.	316/316L	01208-5000-0007
4-in. Class 150 flange, ASME B16.5	NPT 1½-in.	316/316L	01208-5000-0008
2-in. NPT adapter	NPT 1½-in.	316/316L/1.4404	01208-5000-0009
DN50 PN10/PN16 flange for non-pressurized applications	G 1½-in.	PE100	01208-5000-0010
DN80 PN10/PN16 flange for non-pressurized applications	G 1½-in.	PE100	01208-5000-0011
DN100 PN10/PN16 flange for non-pressurized applications	G 1½-in.	PE100	01208-5000-0012
DN50 PN10/PN16 flange, EN1092-1	G 1½-in.	1.4404	01208-5000-0013
DN80 PN10/PN16 flange, EN1092-1	G 1½-in.	1.4404	01208-5000-0014
DN100 PN10/PN16 flange, EN1092-1	G 1½-in.	1.4404	01208-5000-0015

### Gasket for G threaded version

The transmitter is shipped with an EPDM gasket.

Description	Approvals	Material	Part number
Gasket 1½-in., dia 60/47.8/2.0	N/A	FKM GLT	01208-5000-0016
	FDA, EC 1935/2004, NSF/ANSI/CAN 61, WRAS, KTW-BWGL	EPDM	01208-5000-0017

### Nut

The applicable nut is also shipped with each transmitter.

Description	Material	Part number
Nut G1½-in.	PVDF	01208-5000-0018
Nut NPT1½-in.	PVDF	01208-5000-0019

### Cables and connectors

Only 01208-5000-0040, -0041, -0042, and -0046 are suitable for installation in hazardous locations.



Description	Length	Part number
Cable assembly, 4P A-code, M12 female angled - Unterminated, IP66/IP68, Non Ex	6.6 ft. (2 m)	01208-5000-0028
	16.4 ft. (5 m)	01208-5000-0029
	32.8 ft. (10 m)	01208-5000-0030
	65.6 ft. (20 m)	01208-5000-0031
	164 ft. (50 m)	01208-5000-0032
Cable assembly, 4P A-code, M12 female straight - Unterminated, IP66/IP68, Non Ex	6.6 ft. (2 m)	01208-5000-0033
	16.4 ft. (5 m)	01208-5000-0034
	32.8 ft. (10 m)	01208-5000-0035
	65.6 ft. (20 m)	01208-5000-0036
	164 ft. (50 m)	01208-5000-0037
Connector <sup>(1)</sup> , 4P A-code, M12 female straight - Field attachable, IP67, Non Ex	N/A	01208-5000-0038
Cable assembly, 4P A-code, M12 female angled - Unterminated, IP68/IP69K, PVC, Ex <sup>(2)(3)</sup>	16.4 ft. (5 m)	01208-5000-0040
Cable assembly, 4P A-code, M12 female angled - Unterminated, IP68/IP69K, PVC, Ex <sup>(2)(3)</sup>	65.6 ft. (20 m)	01208-5000-0041
Cable assembly, 4P A-code, M12 female angled - Unterminated, IP68/IP69K, PVC, Ex <sup>(2)(3)</sup>	164 ft. (50 m)	01208-5000-0042
Captive safety clip, M12, Ex <sup>(3)</sup>	N/A	01208-5000-0046

(1) The transmitter is not shipped with a connector; the option can be added for non-hazardous installations. The connector is suitable for a cable diameter range of 0.16 to 0.24 in. (4 to 6 mm).

(2) The ambient temperature range is limited to -22 to 140 °F (-30 to 60 °C).

(3) A captive safety clip is shipped with each cable.

## Performance specifications

### General

#### Reference conditions

- Measurement target: Stationary metal plate, no disturbing objects
- Temperature: 59 to 77 °F (15 to 25 °C)
- Ambient pressure: 14 to 15 psi (960 to 1060 mbar)
- Relative humidity: 25-75%
- Damping: Default value, 2 s
- Frequency range: 77 to 81 GHz<sup>(1)</sup>

#### Instrument accuracy (under reference conditions)

±0.08 in. (±2 mm)<sup>(2)</sup>

(1) Radar performance may be affected if it is configured for certain local radio spectrum regulations.

(2) Refers to inaccuracy according to IEC 60770-1 when excluding installation dependent offset. See the IEC 60770-1 standard for a definition of radar specific performance parameters and if applicable corresponding test procedures.

**Repeatability**

±0.04 in. (±1 mm)

**Ambient temperature effect**

±0.04 in. (±1 mm)/10 K

**Sensor update rate**

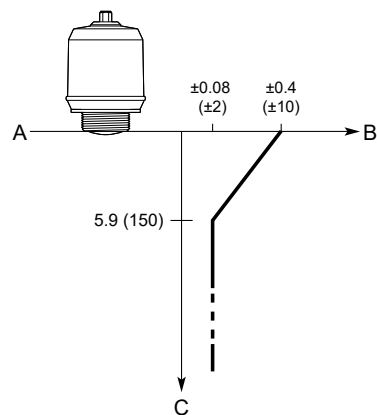
1 update per second

**Maximum level rate**

200 mm/s

**Measuring range****Maximum measuring range**49 ft. (15 m)<sup>(3)</sup>**Accuracy over measuring range**

Figure 3 illustrates the accuracy over measuring range at reference conditions.

**Figure 3: Accuracy Over Measuring Range**

- A. Device Reference Point
- B. Accuracy in inches (millimeters)
- C. Distance in inches (millimeters)

(3) The measuring range is limited to 33 ft. (10 m) for oil-based media (dielectric constant < 10). Also note that a combination of adverse process conditions, such as heavy turbulence, foam, and condensation, together with products with poor reflection may affect the measuring range.

## Environment

### Vibration resistance

2 g at 10-1000 Hz according to IEC 61298-3, level “field with general application”

### Electromagnetic compatibility (EMC)

- EMC Directive (2014/30/EU): EN 61326-1
- NAMUR recommendations NE21

### Pressure Equipment Directive (PED)

Complies with 2014/68/EU article 4.3

### Built-in lightning protection

EN 61326, IEC 61000-4-5, level 1kV

### Radio approvals

- Radio Equipment Directive (2014/53/EU):
  - ETSI EN 302 372
  - ETSI EN 302 729
  - EN 62479
- Part 15 of the FCC Rules
- Industry Canada RSS 211
- Other country approvals

#### Related information

[Product certifications](#)

## Functional specifications

### General

#### Field of application

Continuous measurement of level and open channel flow.

#### Solids level measurement

The Rosemount 1208C is capable of measuring in many solids applications, including limestone and fly ash tanks.

---

#### Note

Sensitivity and performance in solids applications may vary on the reflectivity properties of the media. These properties include dielectric constant, consistency, humidity, grain size, and angle of repose.

---

## Minimum dielectric constant

2

## Measurement principle

Frequency Modulated Continuous Wave (FMCW)

## Frequency range

77 to 81 GHz (76 to 77 GHz in applicable countries)

---

### Note

Operating the device without selecting the relevant radio spectrum may constitute a violation of the regulations of the radio approvals of the respective country.

---

## Maximum output power

3 dBm (2 mW)

## Internal power consumption

< 0.8 W in normal operation

## Humidity

0 - 100% relative humidity, non-condensing

## Turn-on time

< 60 s<sup>(4)</sup>

## 4-20 mA HART®

### Output

Two-wire, 4-20 mA. Digital process variable is superimposed on 4-20 mA signal, and available to any host that conforms to the HART® protocol. The digital HART signal can be used in multidrop mode.

### HART universal revision

7

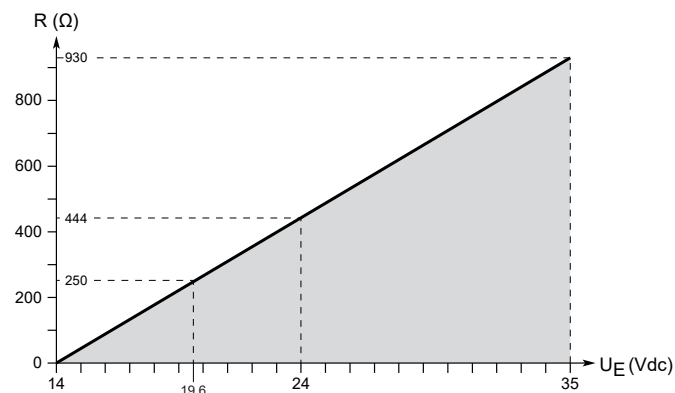
### Load limitations

For HART® communication, a minimum loop resistance of 250 Ω is required. Maximum loop resistance (R) is determined by the voltage level of the external power supply (U<sub>E</sub>):

$$R = 44.4 \times (U_E - 14)$$

---

(4) Time from when power is applied to the transmitter until performance is within specifications.

**Figure 4: Load Limits**

### Analog signal on alarm

The transmitter automatically and continuously performs self-diagnostic routines. If a failure or a measurement error is detected, the analog signal will be driven offscale to alert the user. High or low failure mode is user-configurable.

**Table 1: Signal on Alarm**

Standard	High	Low
Rosemount standard	$\geq 21.75$ mA	$\leq 3.75$ mA
NAMUR NE43	$\geq 21.5$ mA	$\leq 3.6$ mA (default)

### Analog saturation levels

The transmitter will continue to set a current that corresponds to the measurement until reaching the associated saturation limit (and then freeze).

**Table 2: Saturation Levels**

Standard	High	Low
Rosemount standard	20.8 mA	3.9 mA
NAMUR NE43 (default)	20.5 mA	3.8 mA

## Bluetooth® connectivity

### Typical range

At least 50 ft. (15 m) line of sight.

Maximum communication range will vary depending on orientation, obstacles (person, metal, wall, etc.) or electromagnetic environment.

### Related information

[Emerson.com/Automation-Solutions-Bluetooth](https://www.emerson.com/automation-solutions/bluetooth)

## Configuration

### Configuration tools

- Field Device Integration (FDI) compliant systems
- Device Descriptor (DD) compliant systems
- Device Type Manager (DTM™) compliant systems
- Emerson's configuration tools with Bluetooth® wireless technology capabilities

### Related information

[Emerson.com/AMSDeviceConfigurator](https://www.emerson.com/AMSDeviceConfigurator)

### Damping

User selectable (default is 2 s, minimum is 0 s)

### Output units

- Level and distance: ft., in., m, cm, mm
- Level rate: ft/s, in./min, in./s, m/h, m/s
- Volume: ft<sup>3</sup>, in.<sup>3</sup>, yd<sup>3</sup>, US gal, imperial gal, barrel (bbl), m<sup>3</sup>, l
- Volume flow: US gal/h, m<sup>3</sup>/h
- Temperature: °F, °C
- Signal strength: mV

### Output variables

Variable	4-20 mA	Digital output
Level	✓	✓
Distance (ullage)	✓	✓
Volume	✓	✓
Volume flow	✓	✓
Electronics temperature	N/A	✓
Level rate	N/A	✓
Signal strength	N/A	✓

### Volume flow calculations

- Linearization table
- Parshall flume
- Khafagi-Venturi flume

## Smart Echo Supervision™ technology

The Smart Echo Supervision technology automatically tracks all echoes, including those from obstructions in the tank, and distinguishes them from the real product surface echo. This ensures the true product level is reliably and accurately reported.

## Process pressure

-15 to 43.5 psig (-1 to 3 bar)

---

### Note

The PE100 flanges must be used only in non-pressurized applications.

---

## Temperature limits

### Process temperature

-40 to 176 °F (-40 to 80 °C)

### Ambient temperature

-40 to 176 °F (-40 to 80 °C)

### Storage temperature

-40 to 194 °F (-40 to 90 °C)

## Physical specifications

### Material selection

Emerson provides a variety of Rosemount products with various product options and configurations, including materials of construction that can be expected to perform well in a wide range of applications.

The product information presented is intended as a guide for the purchaser to make an appropriate selection for the application. It is the purchaser's sole responsibility to make a careful analysis of all process parameters (such as all chemical components, temperature, pressure, flow rate, abrasives, contaminants, etc.), when specifying product, materials, options, and components for the particular application. Emerson is not in a position to evaluate or guarantee the compatibility of the process fluid or other process parameters with the product, options, configuration, or materials of construction selected.

## Housing and enclosure

### Process connection

NPT 1½-in. or ISO 228/1-G1½-in. thread with a choice of different brackets, adapters, and flanges

## Materials

- Transmitter housing: Polyvinylidene fluoride (PVDF)
- M12 housing: Stainless steel
- M12 contact body: Polyamide (PA)

## Related information

[Declaration of Material Traceability](#)

## Transmitter weight

0.8 lb (0.35 kg)

## Ingress protection

Enclosures meet NEMA<sup>®</sup> Type 4X/6P, IP66, and IP68 (33 ft. [10 m] for 1000 hours<sup>(5)</sup>) when properly installed.

## Impact protection

IK07 (4 J impact test)

## Mounting bracket

### Materials

- Bracket: Stainless steel 316L
- Nut: PVDF

## Flanges

### Materials

- Polyethylene PE100
- Stainless steel 316/316L
- Stainless steel 1.4404

## Threaded adapters

### Materials

Stainless steel 316/316L/1.4404

---

(5) Verified with selection of cables from Weidmuller; for other cable selections IP68 conditions may vary.



Material exposed to tank atmosphere

- Antenna and housing: PVDF
- Gasket: EPDM or FKM GLT
- Flange: PE100, 316/316L, or 1.4404
- Threaded adapter: 316/316L/1.4404

Electrical connection

Power supply

The transmitter operates on 14-35 Vdc at the transmitter terminals.

Connector type

M12 male (A-coded)

Cable selection

Use 24-18 AWG wire (0.20-0.75 mm<sup>2</sup>). Twisted pairs and shielded wiring are recommended for environments with high EMI (electromagnetic interference).  
Field wiring shall be rated for 88 °C.

Wiring diagram

Figure 5: Connection

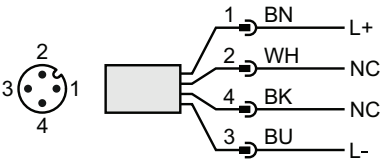


Table 3: Pin Assignment

Pin	Wire color <sup>(1)</sup>		Signal	
1	BN	Brown	L+	24 V
2	WH	White	NC	Not connected
3	BU	Blue	L-	0 V
4	BK	Black	NC	Not connected

(1) According to IEC 60947-5-2.

Installation considerations

Before installing the device, follow recommendations for mounting position, sufficient free space, nozzle requirements, etc.

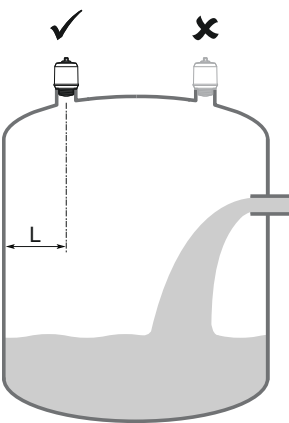
Mounting position

When finding an appropriate location on the tank for the device, the conditions of the tank must be carefully considered.

Consider the following guidelines when mounting the device:

- For optimal performance, the device should be installed in locations with a clear and unobstructed view of the product surface.
- The device should be mounted with as few internal structures as possible within the radar beam.
- Do not mount close to or above the inlet stream.
- Do not mount the device on a manway cover.
- Do not position the device directly over a side manway door.
- Multiple Rosemount 1208C devices can be used in the same tank without interfering with each other.

Figure 6: Recommended Mounting Position



Free space requirements

If the device is mounted close to a wall or other tank obstruction such as heating coils and ladders, noise might appear in the measurement signal. See [Table 4](#) for recommended clearance.

Figure 7: Free Space Requirements

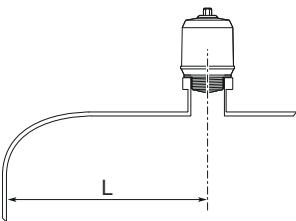


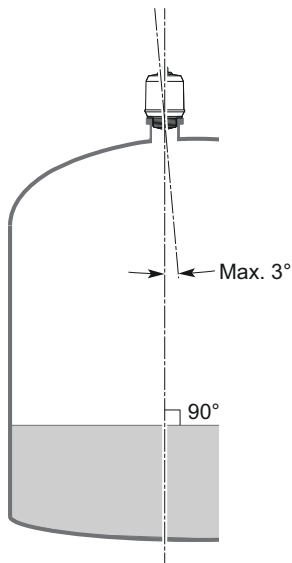
Table 4: Distance to Tank Wall (L)

Minimum	Recommended
8 in. (200 mm)	½ of tank radius

## Inclination

The device should be mounted vertically to ensure a good echo from the product surface. See [Figure 8](#) for recommended maximum inclination.

**Figure 8: Inclination**



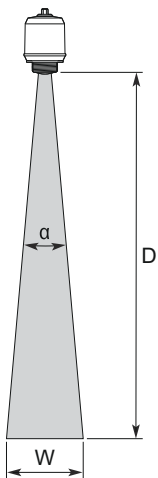
## Non-metallic tanks

Nearby objects outside the tank may cause disturbing radar echoes. Wherever possible, the device should be positioned so that objects close to the tank are kept outside the radar beam.

## Beam angle and beam width

The device should be mounted with as few internal structures as possible within the radar beam.

**Figure 9: Beam Angle and Beam Width**



**Beam angle ( $\alpha$ )**

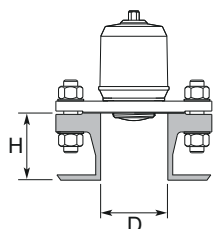
8°

**Beam width**See [Table 5](#) for beam width at different distances.**Table 5: Beam Width**

Distance (D)	Beam width (W)
6.6 ft. (2 m)	0.9 ft. (0.3 m)
13.1 ft. (4 m)	1.8 ft. (0.6 m)
19.7 ft. (6 m)	2.8 ft. (0.8 m)
26.2 ft. (8 m)	3.7 ft. (1.1 m)
32.8 ft. (10 m)	4.6 ft. (1.4 m)
49.2 ft. (15 m)	6.9 ft. (2.1 m)

## Nozzle requirements

See [Table 6](#) for recommended nozzle dimensions. The inside of the nozzle must be smooth (i.e. avoid bad welding, rust, or deposit).

**Figure 10: Mounting in Nozzles****Table 6: Nozzle Requirements**

Nozzle diameter (D)	Maximum nozzle height (H)
1.5 in. (40 mm)	5.9 in. (150 mm)
2 in. (50 mm)	7.9 in. (200 mm)
3 in. (80 mm)	11.8 in. (300 mm)
4 in. (100 mm)	15.8 in. (400 mm)
6 in. (150 mm)	23.6 in. (600 mm)

## Product certifications

See the Rosemount 1208C [Product Certifications](#) document for detailed information on the existing approvals and certifications.

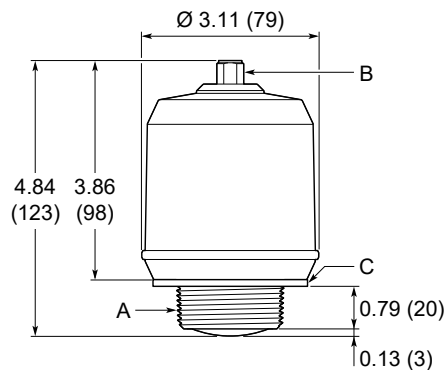
# Dimensional drawings

## Related information

[Type 1 Drawing](#)

## Transmitter

**Figure 11: Rosemount 1208C**



A. NPT 1½-in. or ISO 228/1-G1½-in. thread

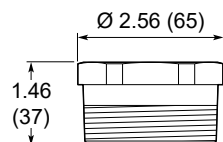
B. M12 male connector (A-coded)

C. Gasket for G threaded version

Dimensions are in inches (millimeters).

## Threaded adapter

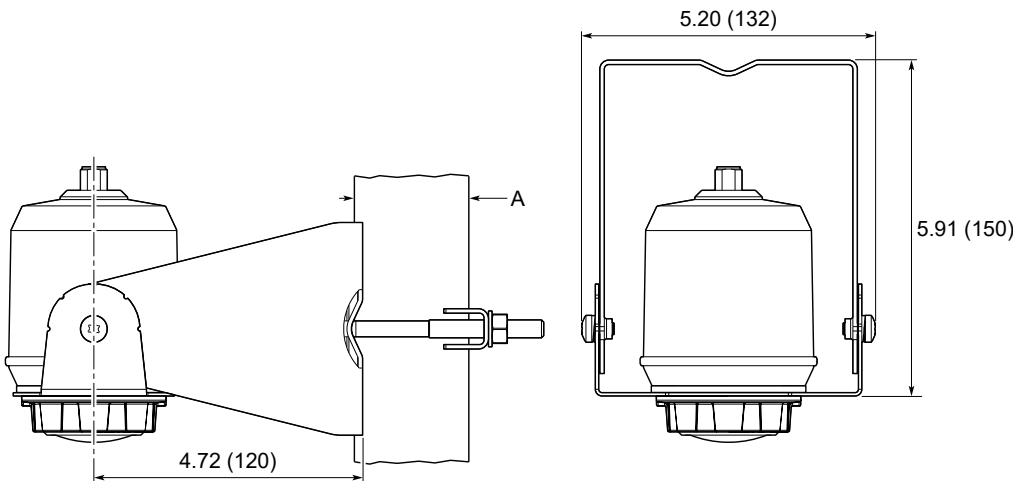
**Figure 12: 2-in. NPT Threaded Adapter**



Dimensions are in inches (millimeters).

# Mounting brackets

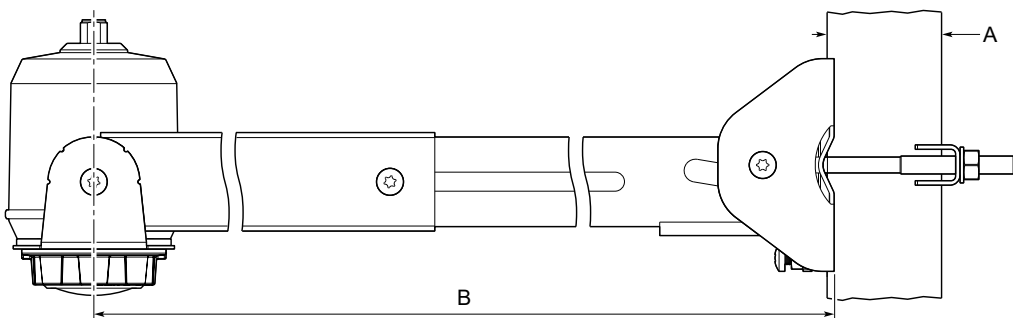
Figure 13: Standard Version



A. For 1- to 2-in. nominal pipe sizes; 2-in. pipe is the recommended size

Dimensions are in inches (millimeters).

Figure 14: Extendable Version

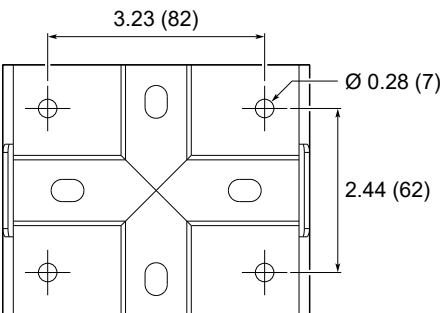


A. For 1- to 2-in. nominal pipe sizes; 2-in. pipe is the recommended size

B. Adjustable length: 17.5 to 28.9 in. (445 to 735 mm)

# Bracket hole pattern

Figure 15: Hole Pattern for Wall Mounting



Dimensions are in inches (millimeters).



For more information: [Emerson.com/global](https://emerson.com/global)

©2025 Emerson. All rights reserved.

Emerson Terms and Conditions of Sale are available upon request. The Emerson logo is a trademark and service mark of Emerson Electric Co. Rosemount is a mark of one of the Emerson family of companies. All other marks are the property of their respective owners.

The "Bluetooth" word mark and logos are registered trademarks owned by Bluetooth SIG, Inc. and any use of such marks by Emerson is under license.

**ROSEMOUNT™**

